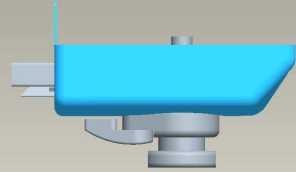
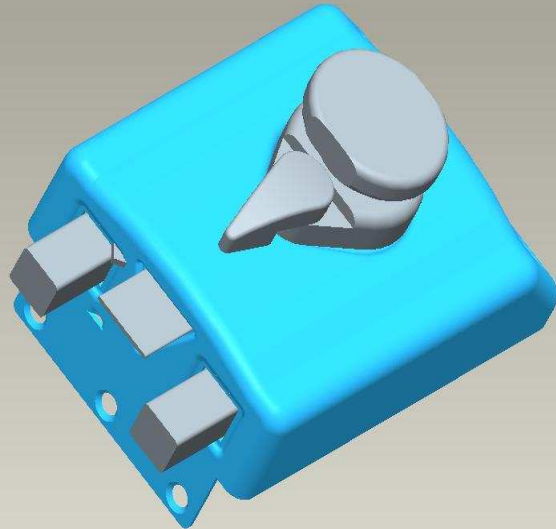


# Rim Lock



## Product Specifications--

Backset : 60 MM  
 Dead Bolt Throw : Double throw 20 MM (10 + 10)  
 Latch Bolt throw : 15 MM  
 Size : 114 X 80 X 50 MM  
 Finish : Powder coated / Satin nickel plated

## Features & Benefits --

- Safety catch for Deadlocking (privacy feature) and Hold open
- Twin deadbolt for better strength.
- Drawn body for robustness and good aesthetics.
- Easy installation.

## Material & Finish Specifications --

No	Name	Material	Finish
1	Body	Mild steel	Powder coated
2	Receptacle	Mild steel	Powder coated
3	Dead bolt	Brass	Polished & lacquered
4	Latch bolt	Brass	Polished & Lacquered
5	Knob	Mazak	Nickel plated / Powder coated
6	Safety catch knob	Mazak	Nickel plated / Powder coated
7	Adapter	Mazak	Nickel plated / Powder coated
8	Internal parts	Mild steel	Zn plated
9	Springs	Spring steel	--